



**P/N 62 000 100**  
Elliptical Manway Hatch Moulding (ONLY)



**P/N 62 000 100/x**  
Elliptical Manway Hatch c/w view window.



**P/N 62 000 200**  
Manway Hatch O Ring Seal (Common for all Filters)



**P/N 62 000 300**  
Manway Hatch Strong Back (Set of Two)



**P/N 62 000 400/50**  
Hatch Cover Brass Nut & Washer (SET OF TWO)



**P/N 62 000 500**  
Round Hatch Gasket 560ø (earlier HS16 filters)



**P/N 61 902 060**  
Gauge pressure 63mm x 250 kPa (1/4" BSP)



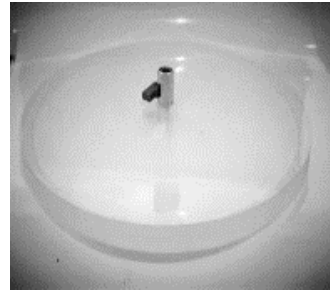
**P/N 61 902 100**  
Gauge pressure 100mm x 250 kPa (3/8" BSP)



**P/N 19 209 052**  
40 BSP Bulkhead Fittings c/w Locknut



**P/N 62 000 900**  
Screened Drain Cock Assembly 40 BSP



**P/N 64 800 150**  
Prepump Strainer Acrylic Lid Only - 400ø x 25 thick



**P/N 64 800 200**  
Prepump Strainer Lid "Rubber" Seal Only



**P/N 64 800 250**  
S.S Strapping band (c/w Toggle Clamps)



**P/N 64 800 255**  
Prepump Strainer Rim only (c/w 4 Clips) - SS



**P/N 64 800 300**  
Perforated Strainer Basket Stainless Steel



**P/N 20 220**  
63-mm x 1/4" BSP Vacuum Gauge Only



**P/N 67 600 006**  
Mini-Ball Valve 1/4" Only



**P/N 67 600 007**  
63-mm x 1/4" BSP Vacuum Gauge, Tee & Vent Valve Assembly

**P/N 68 200 150**  
Footvalve Flap Gasket 100/150ø  
**P/N 68 200 200**  
Footvalve Flap Gasket 200ø